

English



Kumamoto

©2010KUMAMOTO Kumamon#K●●●●●

KAMIAMAKUSA

Tourist Guidebook



<Contents>

- 1-2 Welcome to Kamiamakusa City!
- 3-4 Natural Landscaping -Spectacular Sea & Mountains
- 5-6 Activities -Let's Have Fun in Amakusa!
- 7 History Culture -Know the Culture of Amakusa Island to See and Learn
- 8 Hotspring -Relaxing View of the Scenic Hot-Spring
- 9-10 Food & Souvenirs -Savor Amakusa and Shop
- 11-12 Model Tourists Attraction
- 13-14 Access & Information
- 15 Access Map



Welcome to Kamiamakusa



The Amakusa Islands are made up of over 120 islands of varying sizes. The townscape is filled with a nostalgic atmosphere, where “Nanban cultures” and “Christian cultures” are alive. There are plenty of healing experiences, craftsmanship, and fun experiences that can be found in the sea and mountains. Please feel free to explore and enjoy Amakusa in your own unique way.





Spectacular Sea & Mountains

Healed by the scenery that
can only be seen at this moment.

The Five Bridges of Amakusa

Bridges connecting the Amakusa islands
and beautiful rising sun & sunset

Approx. 15km route connects mainland Kyushu and the Amakusa Islands, and has been recognized as one of "Japan's 100 Best Roads." It is a popular driving course because it gives you the feeling of driving on the ocean. There are unique forms of the six bridges, including "Tenjo Kyo" are also popular.

Location: Oyano-machi, Kamiamakusa City to Matsushima-machi



Mt. Sengan Observatory

Survey the islands from mountain peak
Amazing cherry blossom viewing in spring

You can see the Five Bridges of Amakusa from the mountain peak, which is elevation of 162m. On a clear day, you can also see Mt. Unzen Fugendake and Mt. Aso. In spring (late March to early April), cherry blossoms bloom, and you can enjoy the cherry blossom viewing.

Location: Aitsu, Matsushima-machi, Kamiamakusa City

Mt. Takabuto Observatory



Selected "Japan's Sunset Best 100"
Overlooks the Five Bridges of Amakusa and islands

A spectacular spot that offers a panoramic view of the islands of Unzen-Amakusa National Park and ocean, and it has been certified as "Japan's Sunset Best 100". You can reach near the summit by car.

Location: Amura, Matsushima-machi, Kamiamakusa City

TENKU Zipline "SHIRATAKE"

Total length approx. 350m, maximum
height 90m above ground
Enjoy a forty-second sky round-trip

"SHIRATAKE" is an exhilarating activity, and it can be enjoyed within Unzen Amakusa National Park. Slide down from the 373-meter-high summit of Mt. Shiratake towards Mt. Nakadake, located to the north, where you can enjoy breathtaking views of the Yatsushiro Sea as you descend. You can't help but let out a scream at the thrilling experience, surrounded by breathtaking views of mountains and the vast ocean stretching out in front of you.

Location: 5395-3, Himeura, Himedo-machi, Kamiamakusa City
Opening hours: 9:00am~4:00pm
Closed : Tuesday and Thursday
Phone: +81-969-58-3821



Hiai Beach (Pearl Sun Beach)



The white sand beach
Road to the island appears at low tide

One of the largest beaches in Kumamoto Prefecture with beautiful views and calm waves. At low tide, a path appears in front of you that allows you to walk across to Takamoku Island. Recommended for couples and families.

Location: Nearby 7584 Aitsu, Matsushima-machi, Kamiamakusa City



Dolphin watching

Cruising to feel the sea with dolphins

Cruise the sea of Amakusa and you can meet about 200 wild southern bottlenose dolphins (2 hours). You can encounter dolphins all year long, and the encounters rate is over 90%!



SEA CRUISE

Location: 6215-22 Aitsu, Matsushima-machi, Kamiamakusa City (Head Office)
Phone: +81-969-56-2458

Amakusa Gokyo Cruise

Enjoy the Five Bridges of Amakusa on the sea

Amakusa is dotted with about 120 islands of various sizes. In particular, cruising in the Matsushima area, where the scenery of the archipelago spreads out, allows you to enjoy the spectacular views of the bridges and islands.

SEA CRUISE

Location: 6215-22 Aitsu, Matsushima-machi, Kamiamakusa City
☎ +81-969-56-2458



Myui Observatory

Japan's best starry sky viewing at a fully equipped observatory

Myui observatory at the summit of Mt. Ryugatake (470m above sea level) has been selected as "the best starry sky in Japan". At the observatory in one corner of the campsite, you can enjoy authentic astronomical observation and a planetarium.



Location: 3360-47 Odo, Ryugatake-machi, Kamiamakusa City ☎ +81-969-63-0466
Closed: Every Monday (If Mon is a holiday, the next day will be closed), Dec 29th to Jan 1st

Amakusa Pearl Garden & Sea Donuts Aquarium

Various restaurants and souvenir shops

An aquarium floating on the sea, where you can touch dolphins

In addition to selling high-quality pearls and souvenirs, there are restaurants and cafes, and there are plenty of dining options. At the aquarium floating on the sea, you can see sea creatures from seven continents around the world, you can also watch dolphin shows, and interact with the dolphins.



Location: 6225-8 Aitsu, Matsushima-machi, Kamiamakusa City ☎ +81-969-56-1155
Business hours: 9:00-18:30 (Varies by store. Subject to change depending on season and day of the week)
Closed days: None

Amakusa Visitor Center

Leave the nature of Amakusa to us

It's a facility where you can experience the nature of Amakusa. Nearby, there is a tidal flat that is home to Japan's largest concentration of small crabs, about 2cm long, called "Fiddler Crabs", which got their name from the beckoning gesture they make with their scissors. The number of living animals is approximately 200,000! Capturing is strictly prohibited as it is a rare creature. You can't eat it.

Location: 6331-1 Aitsu, Matsushima-machi, Kamiamakusa City

☎ +81-969-56-3665

Opening hours: 9:00-17:00

Closed on Tuesdays (closed the next day if it is a public holiday) Fee: Free





Let's Have Fun in Amakusa !

In the vast fields of Amakusa with its spectacular views of the sea and mountains, enjoy the tour that can only be experienced here.

mio camino AMAKUSA



The latest information, experiences, and food all in one place. Gateway to the sea and sightseeing!

A tourist base facility located between the 4th and 5th bridges of the Five Bridges of Amakusa. It is a busy gateway to the sea and sightseeing. We accept applications such as bouldering, bicycle rental, and cruising, and the shops sell Amakusa's delicious cuisine and attractive miscellaneous goods. You can also enjoy Amakusa's fresh seafood selections in the BBQ house.

Location: 6215-17 Aitsu, Matsushima-machi, Kamiamakusa City ☎+81-969-33-9500

Business hours: 9:00-17:30, closed irregularly



Sea Kayaking

Touring the uninhabited islands of Amakusa and landing on Shell Island!

Sea kayaking allows you to enjoy the sea and islands of Amakusa Matsushima at eye level. It is a two-seater type that has a sense of stability, and is suitable for beginners (junior high school level and above) as long as they master how to paddle. You can also land and swim around the shell island and nearby uninhabited islands.

unplugged

Location: Aitsu, Matsushima-machi, Kamiamakusa City ☎+81-90-8356-3577



Pottery experience

**Unique to the ceramic island of Amakusa
Perfect as a souvenir of your trip**

Amakusa, known as the production area of Amakusa pottery stone, is also an island dotted with many ceramic kilns. Regard pottery making experience your souvenir from your trip such as hand-making and painting.

Zozogama kiln

Location: 1005 Kami, Iwa, Oyano-machi, Kamiamakusa City ☎+81-964-58-0990



Golf course with great ocean view

Shot towards the sea !

A golf course with a tropical atmosphere spread out on the south side of Oyanojima. The golf course offers a panoramic view of the sea and islands of Amakusa, and the fresh local seafood served at the restaurant is also popular.

Cherry Golf Club Amakusa Course

Location: 11356 Naka, Oyano-machi, Kamiamakusa City ☎+81-964-57-0111



Amakusa bicycle trip

21 routes created by bicycle enthusiasts in Amakusa. You can enjoy the sea and mountains, scenic cycling spots, and plenty of foods recommended by locals!



Oyano Healing Route

Visit Oyanojima and Iwajima while visiting the view spots
An enjoyable course that takes you around all at once

Roadside Station Kamiamakusa Sun Pearl (4.5km) - Kodomari Port (Ebisu Statue) (8km) - Higashioibashi Bridge (3km) - Iwajima Senzoku Area (5km) - Sakura Hana Park (5km) - Higashioibashi Bridge (9.5km) - Iwaya Fishing Port (2.5km) - Shirato Beach (5.5km) - Yumigahama Beach (5.5km) - Spa Thalasso Amakusa (0.5km) - Miyazu Kaiyu Park



Spa Thalasso Amakusa

A thalassotherapy facility located on a hill with a great view. You can rejuvenate your tired body by soaking in the hot springs while looking out at the sea that stretches out in front of you. The spectacular view from the observation deck is the must-see.



Higashi Oibashi Bridge

A large suspension bridge connecting Oyanojima and Iwajima. It is also a popular photo spot for cyclists due to its great views and low traffic. If you drive along the coast of Iwajima Island, the birthplace of tiger shrimp farming, you will see shrimp cages for farming on the shore.



Tosengahama

The total length of the beach is approximately 200m. The water is crystal clear and the waves are calm, and at low tide you can walk to a small island. It's a pebble coast, so it's a good idea to wear marine shoes.



Kodomari Port Ebisu Statue

A small fishing port village. Octopus fishing is popular, and the octopus pots lined up in rows at the port are a sight to see! There is also a fine Ebisu statue in the port.

Sports event information

Amakusa Pearl Line Marathon

Enjoy the island marathon,
run at one's own pace

A marathon where you can run while looking at the scenic islands floating in the sea. Enjoy the run and make it a memorable part of your trip.

Date: Second Sunday of March every year



Amakusa Shiro Cycling Festival

Enjoy island cycling with spectacular views

A scenic cycling event that takes you to lesser-known sightseeing spots, and you can ride the competition course within a specified time safely and happily.

Event season:
Around the 1st. Sunday of Dec every year





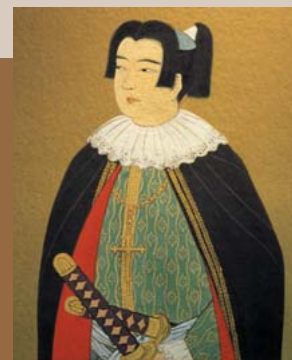
History Culture

Know the Culture of Amakusa Island to See and Learn !

Amakusa is an area where a culture of Christianity still exists.
Expect the unexpected while unraveling the history of the islands.

Who is Amakusa Shiro?

In 1614, the Shogunate issued a nationwide ban on Christianity. At that time, there were many Christians living in the Amakusa and Shimabara areas. People were suffering from the strict annual tax collection and oppression of Christianity by the shogunate, which led to an explosion of dissatisfaction. People started the "Shimabara Amakusa Uprising" in search of freedom, and the person chosen to be their leader was a 16-year-old boy, Shiro Amakusa. After a fierce battle, Amakusa Shiro and the others were defeated by the shogunate army, but their legacy and magnificent history is still passed down to this day.



Amakusa Shiro Museum

A museum telling the life of Shiro Amakusa and view the famous "Bell of love"

A museum that introduces the story and battle of Amakusa Shiro, who became a leader at the young age of 16 and led the Shimabara Amakusa Uprising. There are also historical materials that tell of the Nanban culture and the beliefs of the Hidden Christians, which brought about major changes in Amakusa.

Location: 977-1 Naka, Oyano-machi,
Kamiamakusa City ☎+81-964-56-5311

Business hours: 9:00-17:00
Closed 12/29~1/1
2nd Wed of Jan and Jun



"Hidden Christian Sites in Nagasaki
and Amakusa Regions"

World Cultural Heritage "Sakitsu Village in Amakusa"



A church in a small fishing village with a seaside view

Sakitsu Village tells the history of Christians from their hiding to resurrection. It is dotted with churches, shrines, and temples, and other highlights include paths called "Toya" and "Kake" that jut out into the sea.

Location: 1117-10 Sakitsu, Kawaura-machi, Amakusa City
☎+81-95-823-7650 (Hidden Christian Sites in Nagasaki
and Amakusa Regions Information Center)



Yushima

Cat Island with a circumference of approx. 4km,
and the legendary tale of Amakusa Shiro

This is a 4km island home to around 300 residents and roughly 200 cats. Many legends about Amakusa Shiro circulate around this island. The 100-year-old heart-shaped tree is also a popular power spot, believed to bring fulfillment in love.

Location: Yushima, Oyano-machi, Kamiamakusa City



Also recommended

Sites of Japan's Meiji Industrial Revolution: Iron and Steel, Shipbuilding, and Coal Mining.

World Industrial Revolution Heritage Site "Misumi West Port"

A port that bolstered Japan's development through coal exports



Misumi West Port which was completed in 1898 and is known as one of the three major ports of the Meiji era, is a spot lined with retro buildings as well as a beautiful stone wharf.

Location: Misumiura, Misumi-machi, Uki City





Relaxing View of the Scenic Hot Spring!

The Kamiamakusa area boasts numerous hot springs and baths offering breathtaking views of the sea and surrounding islands.

There is also a footbath that you can enjoy casually.

Kamiamakusa Onsenkyo Attractive hot springs overlooking the ocean

Kamiamakusa City, is known for their "Kamiamakusa Onsenkyo," which features numerous hot springs renowned for their beauty benefits, with many offering stunning ocean views.



Hot spring on a hill overlooking the sea

Spectacular open-air bath. Enjoying the hot springs while admiring the spectacular view of Amakusa's beautiful sea is exceptional.



Enjoy a refreshing foot bath in the hot spring.

Leave your clothes on and soak your feet to soothe your travel fatigue.



32-meter long cave bath

A spacious cave bath measuring 32 meters in length features hot springs that allow you to enjoy two types simultaneously: "Akayu," which shifts in color from red to ochre depending on the weather, and "Shiroyu" known for its crystal-clear clarity.

Important reminders for entering the hot spring

Note 1

Remove your clothes and slippers



Note 2

No cameras and cellphones allowed.



Note 3

Take a shower before entering the hot spring.



Note 4

Avoid putting towels or hair in the hot spring.



Note 5

Refrain from swimming in the hot spring



Note 6

Running in the area is dangerous and is discouraged.



Note 7

Please dry off before leaving the bathhouse.



 Food  Souvenir

Savor Amakusa and Shop

Amakusa is abundant in fresh seafood, meats, vegetables, and fruits. The best way to enjoy these local delicacies is right at the source, where the flavors are truly unique. There are also many recommended souvenirs to take home.



Prawns

Crisp texture and sweet flavor, with a variety of tiger prawn preparations

Prawns are a specialty of Amakusa, known for their firm texture and natural sweetness. They can be enjoyed in various ways, including sashimi, salt-grilled, and tempura. Popular dishes include fried shrimp and the oversized tiger prawn tempura bowl, which is so large it overflows the bowl.



Amakusa Daioh

Mysterious free-range chicken "Amakusa Daioh" Taste the dynamic flavor

The Japan's largest chicken, the "Amakusa Daioh," originated in Amakusa. Though it once went extinct, it has made a remarkable comeback. You can now savor a variety of dishes, including flavorful steaks, aromatic grilled cuts, hearty grilled wings, and noodle dishes that highlight the rich flavors of its broth.



Sashimi

**Right next to the port!
So fresh, so delicious!**

Sashimi, made from fresh fish delivered directly from the port and expertly prepared by skilled chefs, is a signature dish of Amakusa's gourmet scene. Some restaurants are run by fishmongers, while others feature in-store fish tanks, ensuring the utmost freshness and flavor. You can also enjoy set meals and seafood bowls for a complete dining experience.



Amakusa "Champon"

One of Japan's three major Champon noodle dishes. Wide variety available.

"Amakusa Champon" is considered one of Japan's three major champon dishes, alongside "Nagasaki Champon" and "Obama Champon." It's not limited to specialty shops and Chinese restaurants; you can find it in cafeterias, family restaurants, and even coffee shops, offering a wide variety of flavors to enjoy.



Sea urchin

Enjoy the rich sweetness

The sea urchin grown on a diet of plenty of seaweed near Yushima is said to be of particularly high quality and has a distinct sweetness and umami flavor. The sea urchin is at its peak in the summer, and you can eat it raw as well as grilled.



Tiger puffer

Kumamoto Prefecture is the second largest producer of tiger puffer fish in Japan. Among them, the tiger puffer fish grown in the beautiful sea of Amakusa is the best in Japan for its quality and taste! You can enjoy it in many different places and in a variety of ways, like hotpot, sashimi, and fried.



Yushima radish

Yushima daikon radish grows in a fluffy field near the top of Yushima. It is famous for its size, juiciness, and sweetness, and weighs over 3kg. Its peak season is from December to February. Yushima daikon steaks and stews are served at most accommodations and restaurants in the city.



Born from citrus, a jam that goes well with meat

A jam made with four types of citrus fruits: Shiranui, Pearl Kan, Amakusa Bankan, and Amakusa. The ingredients contained in citrus fruits have the property of tenderizing meat, and the accent of black pepper makes meat dishes such as chicken, pork, and beef even more delicious.



Constant seller of the Amakusa souvenir

Amakusa Sable

Sablé is one of the Nanban sweets that was introduced to Amakusa during the time when Christianity started in the area. It is a long-selling product, with a crispy texture and milky flavor.



Chikuwa/Tempura

Chikuwa made with sea bream and sardines caught in Amakusa is plump and delicious. Kamaboko, fried minced fish in oil, is one of Amakusa's specialties, and is also called "tempura".



Moringa herbal tea

Moringa is packed with nutrients and is attracting attention as a superfood. You can enjoy Moringa leaf grown in the magnificent nature as a delicious herbal tea. Tea pack type and powder type are also available.



Ikenotsuyu Yushima

Ikenotsuyu is a popular potato shochu produced by Amakusa Sake Brewery, the only sake brewery in the Amakusa Islands. This is a small-batch sweet potato shochu brewed using only sweet potatoes grown in Yushima. If you want to enjoy the deep sweetness and richness of this drink, we recommend diluting it with hot water at about 80 degrees Celsius.



Soft Ice cream

There are salted soft serve ice cream reminiscent of the sea of Amakusa, an adult-flavored olive soft serve sprinkled with Amakusa olive powder, and a soft serve ice cream packed with fruit.



Pearl Jewelry

Kamiamakusa, surrounded by the calm sea, is known as one of Japan's leading pearl producing areas. We also have a wide selection of accessories such as genuine Akoya pearls, and freshwater pearl necklaces, earrings, rings, and tuck pins.



Model Tourists Attraction

A trip to the charming spots in the Kamiyamakusa area. Your trip will be more enjoyable if you take advantage of sightseeing activities by trains, buses, and boats. Here we will introduce the routes where you can enjoy the scenery along the way.

Route1 Immerse yourself in the charms of Amakusa on sightseeing t

Route1 Immerse yourself in the charms of Amakusa on sightseeing t

10:21am Start from Kumamoto sta.
Let's take the A train※Please confirm the time schedule

11:35am Arrive at Misumi sta.

11:50am Departure from Misumi port
Amakusa Takarajima Line

You can order "Bankan" whisky soda, beer, coffee, and more at the bar on the train.

Enjoy the island-hopping experience while traveling on a comfortable cruise boat.

Route2 A leisurely Bus journey

Route2 A leisurely Bus journey

11:03am From Kumamoto Sta. via Amakusa express bus

12:34pm Arrive at Maejima bus Stop

13:20pm Departure from Matsushima (Maejima) Port

You can enjoy the magnificent scenery from the bridges.

Amakusa gourmet food in the Maejima area

Amakusa Gokyo Cruising

The spectacular views of the Five Bridges of Amakusa, the sea, and the islands that you can enjoy on a bus trip with high windows are sure to make for great photos!

Enjoy your favorite Amakusa gourmet food in the Maejima area, which also has seafood and champon restaurants.

Approximately 30 minutes of cruising to enjoy the spectacular views of islands and bridges.

Route3 Local trains, buses, and ships: a casual and deep island trip

Route3 Local trains, buses, and ships: a casual and deep island trip

9:03 Departure from Kumamoto Sta. Amakusa Misumi Line(local train)

9:59 Arrive at Misumi Sta.

10:38 Departing from Misumi Sanko bus sta. Ride on "Going to Sun Pearl" route bus

Head to Yushima, also known as "Cat Island," by connecting local trains, route buses, and regular boats!

A retro train that is also used for commuting to school or work.

It's on the right after getting off at Misumi Station. Get on the bus at Misumi Sanko bus sta.

Misumi West Port

Let's take a look at the World Heritage Site "Misumi West Port" from the train window.

g trains and cruise boats

12:10pm
Arrive at
"Matsushima (Maejima) Port"

FOOD

Amakusa gourmet food in the
Maejima area



Lunch packed with Amakusa ingredients
to enjoy at a restaurant with an ocean
view

13:00pm
Departing from
"Matsushima (Maejima) Port"

Natural landscape

Dolphin watching



The sea where wild southern bottlenose
dolphins live. Soothing and idyllic scenery!

15:00pm Arrive at "Matsushima (Maejima) Port"
Short walk
Souvenir Shopping in the Maejima area
There are also plenty of delicious souvenirs
from all over Amakusa.



We recommend staying in the
Matsushima Onsen area, where
you can enjoy relaxing hot
springs while admiring the
beautiful scenery of Amakusa.

15:40pm Departing from
Matsushima (Maejima) Port

16:00pm Arrive at Misumi Port

16:35pm Departing from
Misumi Sta.
("Let's take the A train")

17:13pm
Arrive at Kumamoto Sta.

Natural landscape

Okoshiki Coast



View the coastline that even
Emperor Keiko was fascinated by
from the train windows. At low
tide, beautiful sand ripples
appear on the tidal flats.

13:50pm Arrive at Matsushima (Maejima) port
14:56pm Leave Maejima bus stop
15:07pm Arrive at Sun Pearl bus stop

Hot Spring

Enjoy the spectacular hot springs
at Umihotaru



Refresh yourself at Umihotaru, a
private bath with ocean views in
all rooms. You can also enjoy the
footbath bar.

History Culture

Amakusa Shiro Museum



In addition to exhibits on
Christian culture, there is also a
short movie about Amakusa
Shiro.

Souvenir

Roadside Sta.
Kamiamakusa Sun Pearl



There are vegetables, fruits,
seafood, flowers, and carefully
selected processed products. The
soft serve ice cream is also delicious.



There are also plenty of accommodations in the
Oyano area. You can enjoy hot springs and
seafood dishes.

16:36pm From Sun Pearl bus stop
Amakusa express bus

18:02pm Arrive at
Kumamoto Sta.

Two bridges lined up



Tenjo Kyo is a bridge only for cars, and
Tenmon Kyo is a bridge that can also be used
by cyclists and pedestrians.

FOOD

Lunch around Sun Pearl



10:59 Arrive at Sun Pearl bus stop
13:15 Departure from Ebitto Port

16:00 Departure from
Yushima Port

16:30 Arrive at Ebitto Port

13:45 Arrive at
Yushima Port

About 30min

About 30min

About 15min

About 20min

About 5min

About 55min

About 5min

About 5min

About 5min

About 5min

About 5min

About 5min

About 5min

Stroll around Yushima
also called Cat Island



Enjoy the time on the island, including
cats, heart-shaped oak trees, the
Koisoru Lighthouse, fields, and shrines.

17:35 Departure from Sun Pearl bus stop

17:56 Arrive at Misumi Sanko Bus Sta.

18:23 Departure from Misumi Sta.

Local train

19:18 Arrive at Kumamoto Sta.

Access & Information

Access from major locations

From major airports to Kumamoto City

Aso Kumamoto Airport → Sakuramachi Bus Terminal (about 50 min by limousine bus)

Fukuoka Airport → JR Hakata Station (about 5 min by subway) → JR Kumamoto Station (about 40 min by Shinkansen)

Kagoshima Airport → JR Kagoshima Station (about 1 hour by limousine bus) → JR Kumamoto Station (about 40 min by Shinkansen)

Train

Express "Let's take the A train"

It's a sightseeing train with a bar counter, and operates on Saturdays, Sundays and holidays. There are also three round trips per day during specific periods.



Kumamoto Sta.
About 60 min
Misumi Sta.



Amakusa Misumi Line

Local train (16 round trips per day)

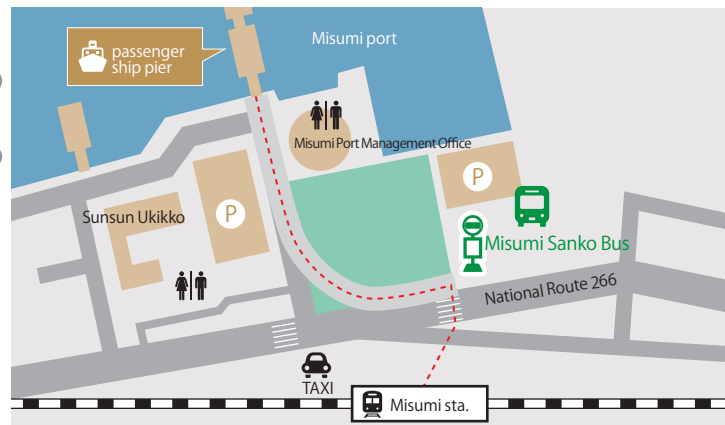
Kumamoto sta.
About 55min
Misumi Sta.



High speed boat

Amakusa Takarajima Line

Misumi port
About 20min
Matsushima (Maejima) port



Car

From the Fukuoka area

Kyushu Expressway Fukuoka IC
→ Kyushu Expressway Matsubase IC (about 80 min)
→ National Route 266 (about 50 min to Sun Pearl)

From Kagoshima direction

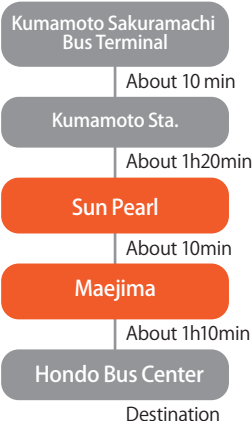
Kyushu Expressway Mizobe Kagoshima Airport IC →
Kyushu Expressway Matsubase IC (about 85 min)
→ National Route 266 (about 50 min to Sun Pearl)



Bus

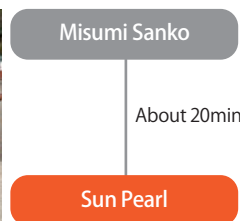
Rapid Amakusa (approx. 10 round trips per day)

From Kumamoto City to Amakusa. The views of the islands and sea from the high windows of the bus will liven up your travel mood.



Route bus to Sun Pearl (approx. 15 round trips per day)

From the Misumi Sanko bus sta. right next to Misumi Station and Misumi Port. This is a convenient local bus that goes to the main spots in Kamiyamakusa.



How to get on and off the bus and how to pay the fare



1. Take a numbered ticket.



3. Press the button to get off the bus.



4. Check the fare by comparing your ticket number with the number on the fare display machine. Prepare the exact amount. If you need change, exchange your money in advance at the machine located in the fare box next to the driver's seat.

- ① Next bus stop
- ② Fare display (ticket number)



5. Upon arrival at your destination, put your fare and ticket into the fare box slot and get off the bus.

- ① Please put the numbered ticket and the fare or ticket together in the fare box.
- For customers using IC cards, touch the card reader ②.

※Kumamoto Sakuramachi Bus Terminal also sells discount tickets and the Amakusa Unlimited Ticket.



Yushima liner

A regular ferry that connects Oyanojima and Yushima.

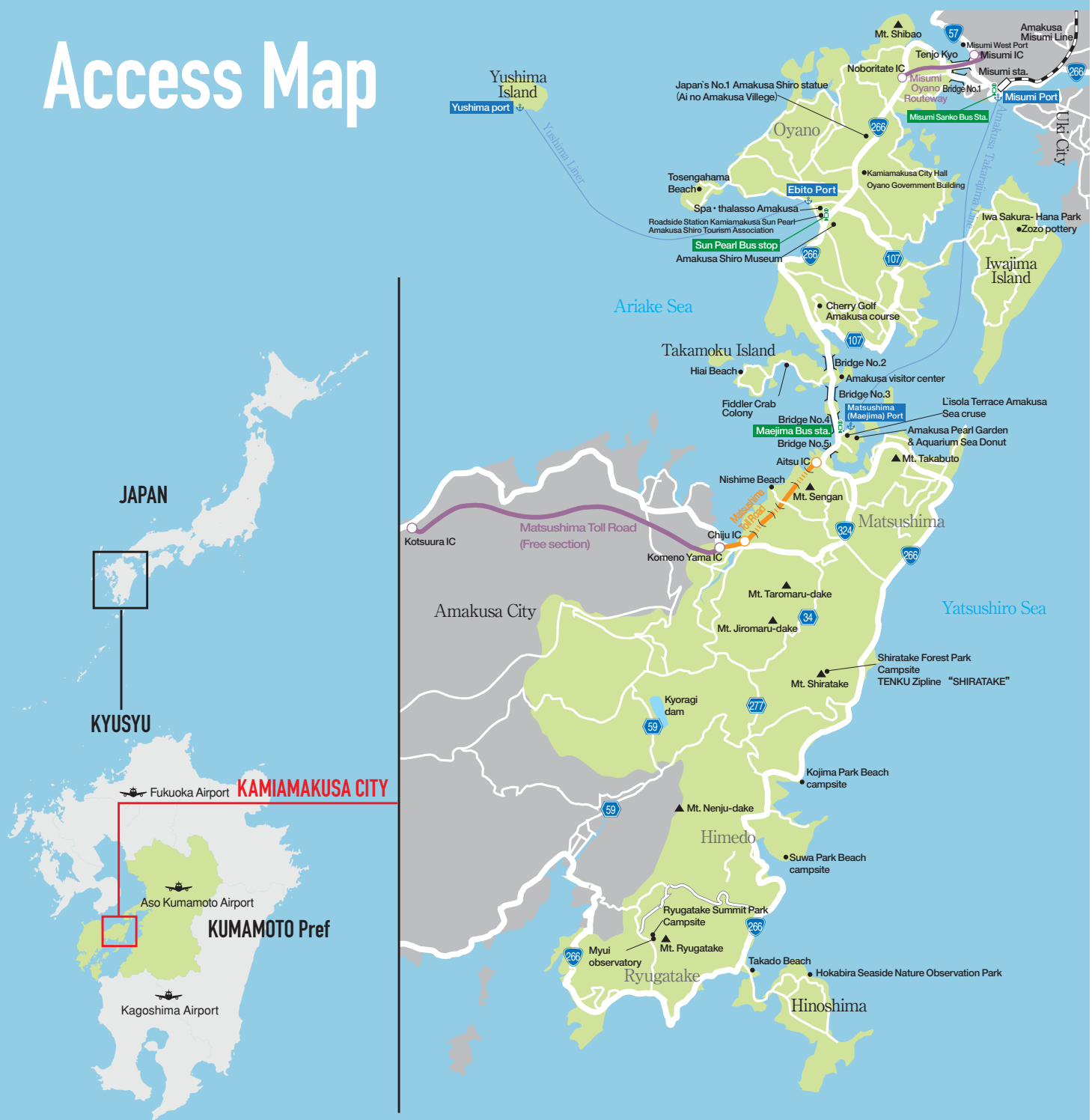


Timetable		
	From Yushima	From Ebito
1	7 : 30	8 : 15
2	9 : 00	10 : 00
3	12 : 00	13 : 15
4	14 : 00	15 : 00
5	16 : 00	17 : 30

Operation route Ebido Port - Yushima Port
 Required time approx. 30 min.
 Price: 800 yen for adults, 400 yen for children
 *Fee must be paid on board.



Access Map



Kamiamakusa Economic promotion department
 Tourism Hospitality division
 1514 Kami, Oyano-machi, Kamiamakusa City, Kumamoto
 ☎ : +81-964-26-5512
<https://www.city.kamiamakusa.kumamoto.jp/>



Amakusa Shiro tourism association

〒869-3692 11582-36 Naka, Oyano-machi, Kamiamakusa City, Kumamoto
 ☎ : +81-964-56-5602
<https://kami-amakusa.jp/>

