



ナナメ上ノ上天草。

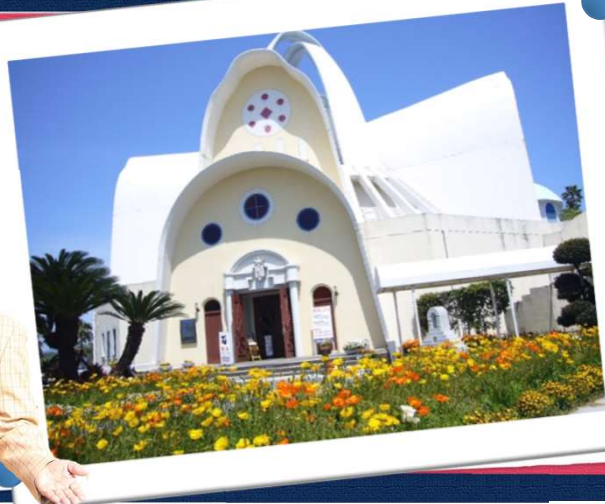
NANAME-UE KAMIAMAKUSA

Historical Sites

I recommend
Meister Guide KAMIAMAKUSA
for your trip

Our professional guides
will help making your trip
and experiences more
convenient and deeper.

For more information,
please check here.



2 Day Course



Start at 9am

Day 1

Amakusa Shiro Museum

40min



It is a 「History Museum」 that conveys the
passion of Shiro Amakusa

Amakusa Shiro Museum introduces the historical
background of "Amakusa-Shimabara rebellion" and
the cultural background influenced by the western
culture in an easy-to-understand ways using materials
and images. In the park, there is "a bell for love". Try
ringing the bell with the view of Ariake Sea.



I will tell the history of
Amakusa in an easy-to-
understand way!



Address ☎ 0964-56-5311
977-1 Naka, Oyano-machi, Kamiamakusa city



10min

Amakusa Visitor Center

30min



A facility that introduces the nature and history of Amakusa

There is a movie theater and some exhibitions of
panels and photos that make it easy to understand
the nature and history of Amakusa.

At the adjacent restaurant 『Kahnya』, you can
spend a relaxing lunch and cafe time with the
wonderful views of Amakusa.



Address ☎ 0969-56-3665
6311-1 Aizu, Matsushima-machi, Kamiamakusa
city



10min

Senganzan Mountain

40min



I will guide here deeply as a professional "Meister Guide".

Even people who are not confident in walking can enjoy the view at the new observation deck.

10-minutes-walk from the parking lot to the view point



15min

Megalith

15min



Here !



Kyushu Olle Matsushima course

Huge rocks that have been weathered over many years

These rocks were crumbled down by erosion of Senganzan Mountain. It is said that your wish will come true if you would pass through the cavity below.

Access

15 minutes by walk following the blue and red ribbons of the Kyushu Olle course toward megalith from Senganzan Mountain



20min

Kinshoji Temple

1h



There is 「New Shikoku 88 Temples Pilgrimage」 around the temple.

It is located in a quiet mountain village, Kyoragi. The total length of 「New Shikoku 88 Temples Pilgrimage」 route is about 1.4 kilometers and 40 minutes walk. It was designed to take into account of actual 'Shikoku's 88 sacred places'. 88 stone Buddhists are enshrined in the sand received from 88 places in Shikoku, which have been worshipped by people.

Let's go on the pilgrimage with walking in the forest peacefully. I will guide you!

There are the oldest Six Jizos in Amakusa region, built in 1481.



Address

2365 Kyoragi, Matsushima machi, Kamiamakusa city

☎ 0969-57-0024

↓  30min +  5min

Yadake Megalith in Mt. Shiratake



Azalea (Amakusa-Mitsuba-Tsutsuji) grows only in the upper part of Amakusa in Japan.



40min





Is it the biggest level of dolmen in the world ?!

The altitude of Mt. Shiratake is 370m. There is 『Shiratake Forest Park Campsite』 halfway up the mountain, and you will find huge stones looks like an ancient temple near Yadake Shrine. In April, you can see beautiful Amakusa Azalea around this area, which has been designated as an endangered species. If these stones are stone tombs, called dolmen, they would be one of the world's biggest level of dolmen. \ (◎o◎) /

ACCESS

Take Route 266, and you get to Himedo town. Turn right on the guide board of 『Shiratake Forest Park』 along Route 266 and go for the parking lot of 『Yadake Shrine』 . 5 minutes on foot along the guide board from the parking lot.

↓  5min +  35min

A Village Official Ruins of Fujita Family and Kanjoji Temple

25min



The Village Official Ruins is 400 years old

In 1641, when the Shoya (village headman) system was implemented in Amakusa by Suzuki, the first Goemon was appointed as a Shoya in Hinoshima area. After that, he was selected to a big Shoya (village official) of Toki-gumi, and the ruins is here. It is also called 『Yakuza』 and numbered 1 as the land number in Hinoshima.

Address 【Kanjoji Temple】

3 Hinoshima, Ryugatake-machi, Kamiamakusa city

『Mont Saint-Michel』 in Kamiamakusa



Kanjoji Temple

This is an island, located in Hinoshima, Ryugatake town. It retains untouched nature. When the tide is out, you can cross the island.



Hokabira Nature Observation Seaside Park

↓  10min

Fudo Shrine

20min



Meister Guide
KAMIAMAKUSA



For more information, please check here.

There is a connection with Kobo daishi (a.k.a. Kukai)

In spring, cherry blossoms bloom beautifully here and you can enjoy cherry blossoms viewing. Also, the view of Mt. Ryugatake and Mt. Kuratake is marvelous! The photo on the left shows 『babies' ceremonial entrance into the ring』 which has been held every year of June 28th of the lunar calendar to pray for staying in good health and huge harvest of the five grains.

ACCESS

It is located on the cape in Shimookegawa, Ryugatake town, and is opposite side of Kanjoji Temple centering on Hinoshima-ohashi Bridge.



25min

The tree is estimated to be over 300 years old.

The tree is located in Nagame Jugosha Shrine. Ako trees grow wildly throughout Amakusa area. This Ako tree has been designated as a natural monument by Kumamoto prefecture. The 11-meter-long trunk is ranked 1st in Kumamoto Prefecture and ranked 3rd in Japan. It is a sacred tree with roots sticking out all over the grounds of the shrine. You feel the history of it.

Address

【Nagame Shrine】

3947-2 Himeura, Himedo machi, Kamiamakusa city

An Ako tree at Nagame

15min



Big !!



15min



10min

Mt. Takabuto

15min



You can go through the road to get to the parking lot if your car is smaller or the same size as a minibus.

Here is also popular as a photo spot !

The view from the observation deck is so superb that it was chosen as one of Japan's 100 best sunsets. The authentic view of the sunset on the islands of Matsushima spreads out in front of you.

You can drive close to the observation deck.

ACCESS

Take Route 266 from Himedo town toward Amura, Matsushima town. Go up to the left side at a signboard and 5 minutes' drive, you get to the parking lot and 10 minutes walk to see the great view.

Kamiamakusa Night

Let's go drink delicious one!

Delicious Cuisine

produced in Kamiamakusa

Hot spring bath

which makes your body and soul relaxed

Abundant Nature



YUMMY

YUMMY





A lighthouse *It has been registered as a 『Romantic Lighthouse』.*

It is a white lighthouse, built in 1916 and it remains in the same condition as it was built. If you look out over the sea, you will find Shimabara peninsula, while the tropical plants are growing thickly, which have some traces of the past.

The Iccyo baka grave *A symbol of the kindness of the islanders*

In 1792, when the Great Eruption of Unzen Fugen-dake which is said to be 『Shimabara-Taihen, Higo-Meiwaku』, the people of this island held memorial services for the dead people drifted to the island by the big tsunami.

An Ako tree *A.K.A 『a heart tree』*

Ako Trees used to protect people's houses from the wind.
The heart-shaped Ako tree is popular as a photo spot for couples.

A swordsmith basin *A site of an arsenal*

The basin is said to have been used by swordsmiths to make weapons such as spears and swords. It was once placed outside of the island, but it returned to the island in the early Showa period and was placed back in Suwa Shrine.

Suwa shrine *Over 200 years of history*

In 1817, it was enshrined the divided deity of Nagasaki Suwa Shrine.
In 1831, it was burnt down due to Yushima Fire, but it was rebuilt in 1857.

Mine park *Located at the top of Yushima, and there is an observation deck which altitude is 104m.*

From the hexagonal observatory, you can see Unzen, Shimabara and the islands of Amakusa. Agricultural fields spread around, and there are Christian graves and a monument of Dango jima.



The site of Tomi-zuka *A secret base of the battle*

It is said that Shiro Amakusa made people make weapons on the island while preparing for the Amakusa-Shimabara rebellion which became one of important historical battles. It was also a secret base. At that time, a guard was placed on top of the island, guarding ships, and serving as a foothold.

The monument of Dango jima *The site of the base for the operation before the Amakusa-Shimabara rebellion*

It is said that the leaders of uprisers gathered here to hold a meeting before the war, that used to be called Dango. Shiro Amakusa became a general in the meeting on Oct. 24th, 1637. They took part in "the attack of Shimabara Castle" on Oct. 26th. These things are the reason why Yushima is called "Dango jima"

Ryoseninden gekkoso hakukoji tsuka *The younger brother of Christian Daimyo (feudal lord) died here.*

It is the grave of Suminori Arima who is the younger brother of Harunobu Arima, 13th generation of Arima family and was Christian Daimyo(feudal lord). It is said that Suminori faced the wrath of Harunobu because of the difference in religion and was exiled to this island and killed. (Left side of the photo)

The grave for a Christian missionary *a cross carved in a unique shape*

It is the tombstone of a Japanese Christian missionary who died in Yushima and is engraved with a cross. (Right side of the photo)





Check here for restaurants,
experiences and other travel
information about Yushima.



Yushima



◆ Liners 【Yushima Syosen】 ◆

【Fare】 Adults: 600 yen - for 12 yrs and older

Child : 300 yen – for 6-11 yrs

※Child of 5 yrs or younger is free, and second child between 1-5 yrs will be charged as a child of 6-11 yrs old.

Yushima(湯島) Dep

25m

Ebito(江樋戸) Dep

08:15 am

10:00

01:15 pm

03:00

05:30

Syowa-maru

0964-56-4060

Kikusei-maru

0964-56-4063

07:30 am

09:00

12:00

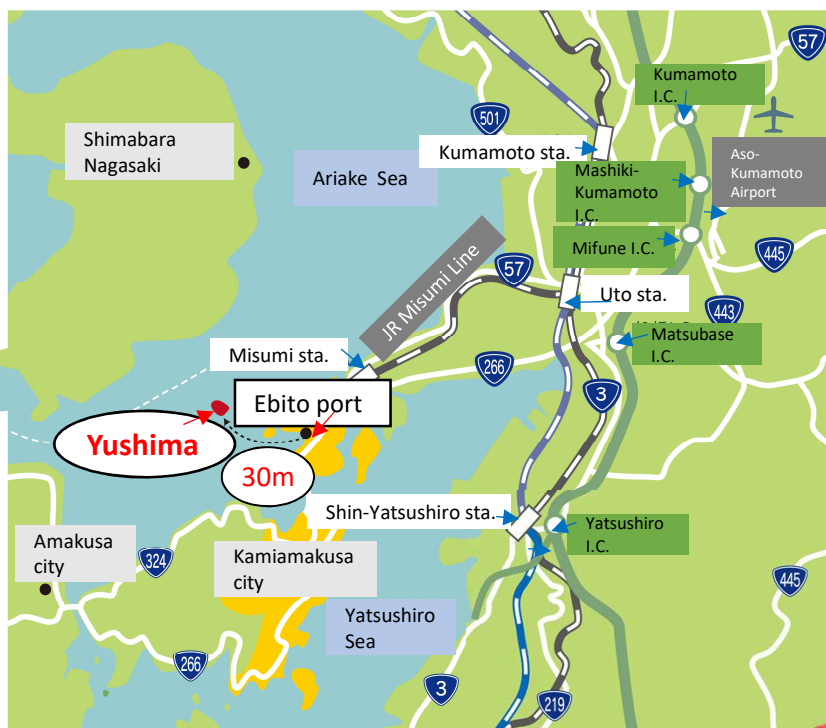
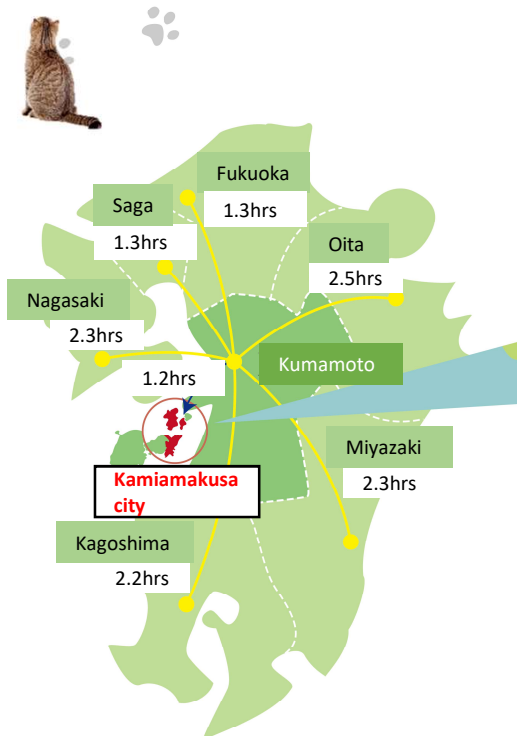
02:00 pm

04:00

※Time schedule might be changed due to the weather or season.



Access



ナナメ上ノ上天草。

NANAME-UE KAMIAMAKUSA

Kamiamakusa City Tourism Sec.

TEL : 0964-26-5512

E-mail : kankou@city.kamiamakusa.lg.jp

